

Lux Eterna, *Stone Amphibian III*, 2017, Pigment ink and gold foil on paper, 21x29cm.

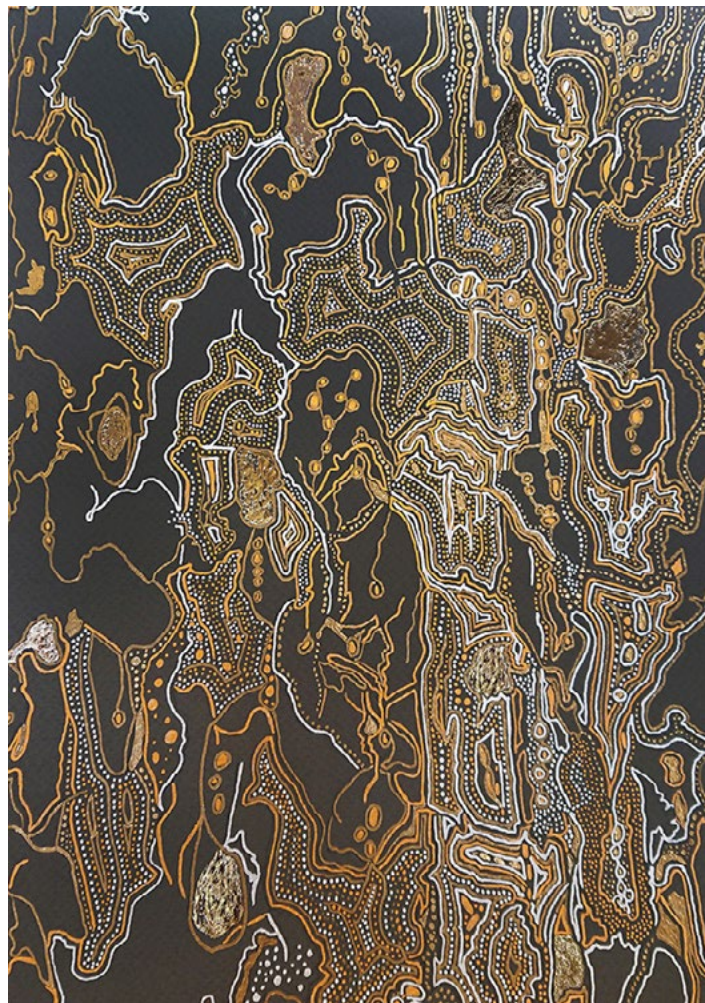
LUX ETERNA

OUR NON-HUMAN PSYCHE

19 NOV - 12 DEC 2020

Thurs & Fri - 11am - 6pm

Sat - 11am - 5pm



Lux Eterna, *Lacebark Elm II*, 2020, Pigment ink, gold leaf and foil on paper, 29 x 21 cm.

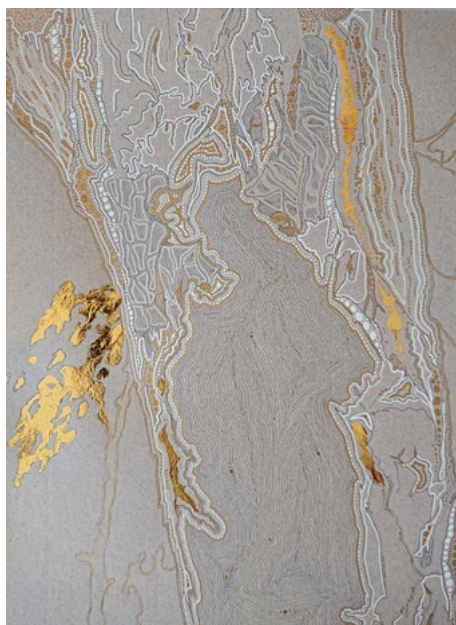
Lux Eterna's solo-exhibition at Stanley Street Gallery is a meditation on the expansive and intricate magnificence of the natural world.

In this exhibition of 2D works, Lux Eterna creates a series of ink drawn and hand foiled works on paper, which are amplifications of her personal meditative and embodied experiences when immersed in vast expanses or intimate pockets of landscapes respectively. Her detailed and delicate ink work, points at the immensity of Earth's time-scale, making obvious a slow, gentle and granular being materialised on paper. These meditatively minute markings communicate a long duration wherein the artist is able to recapture the subtle resonances she assimilates in situ. In acknowledging such cellular-like detail, her works invite us to consider the magnitude and gracious endurance of our non-human world, before we spawned and long after we go.

Lux Eterna's practice focuses on encouraging post and trans-human futures that are augmented by sensitivity, imagination and the embodied gaze. Lux asks questions around human subordination to technology without deeper understanding of our bodies. Her collaborative work investigates decolonisation as community dialogue and co-divining un-settling practices, for the scribing of more inclusive and non-colonial futures. Lux is also further researching around how we may re-author language, for a more relational reciprocity with our non-human world.



Lux Eterna, *Lacebark Elm I*, 2020, Pigment ink, copper leaf and foil on paper, 29 x 21 cm.



Lux Eterna, *Lightning Ridge*, 2020, Pigment ink and gold foil on paper, 21x29cm.



Lux Eterna, *Birch Tree Moss Study II*, 2020, Pigment ink, gold leaf and foil on paper, 65 x 50 cm.

Exhibition Essay - Ben Bazevski

Exploring the edge of a forest, we are called further into its cradle of trees and rocks. How do they receive us? How do they relate with us? What do they tell us?

If only we could hear their primordial hum, no longer familiar and forgotten.

Consider the immensity and expanse of time, speaking through and to our ancient biology while exploring the purity of nature, our own receptivity to it, and the subtle frequencies when we visit those slow and still silent places.

Our Non-human Psyche is a stunning visual attempt to decentralise the human in our collective narrative – in her collection of finely intricate ink drawings of trees, moss, stones and dry lakes, Lux Eterna invites us to appreciate the overwhelming truth of what we're not really seeing, what we don't make time to see, feel and experience. The meditative quality of Lux's works, are evidenced in repetitive minute details, which tune into and are emblematic of cellular frequencies deep within our non-human kin. Re-instilling a reverence towards these ancient living beings so close to us, in us, perhaps that we can begin to ordain our spirituality in this reality.

We are confronted to consider all that glitters is not gold, where Lux delicately hand foils her works with gold and copper. Recalibrating the place from where we dig out riches, perhaps to where a mirror could be; this new metallic anatomy shifts our focus from the ground and to our non-human kin, also seeing ourselves reflected back in them.

These exquisitely ink laced and gold laden vignettes supplant the royalty, religion and pageantry of humankind's first iconographic art and ritualistic subversions for order out of perceived chaos.

Lux's show guides us through a space that beckons us to re-ignite our relationship to our prehistoric botanical ancestors and their transformative powers of adaptation, of becoming still, more sensitive and more aware in the face of ecological adversity.

Ben Bazevski - Writer, Editor and 2020 Winner of International Geist Poetry Contest

1/52-54 Stanley Street Darlinghurst NSW 2010

P: 0293681142 www.stanleystreetgallery.com.au E: mail@stanleystreetgallery.com.au

Hours: Thurs - Fri 11-6pm, Sat 11am-5pm



Image of the artist, Lux Eterna, in her studio, 2020.

ABOUT LUX ETERNA

Lux Eterna is an interdisciplinary artist working across forms of performance, dance, meditation, 2D/3D media, photography, cinema and sound all underpinned by explorations of the embodied gaze, authoring post-human futures, decolonisation and awareness. Graduating with a BA from Sydney University in art and performance, she later continued with digital film making at NYFA. Lux's performance and meditation practices have positioned her as a facilitator for Marina Abramović in residence, Sydney. Her video work has recently been featured on Dance Cinema, the Tasmanian International Video Art Festival; alongside work from Bill Viola, The Beams Festival, Vivid Sydney, The Spectrum Now Festival and Instants Vidéo; Container TV Milan. Her photographic work has been selected for exhibit at Chashama's The Beauty of the World event (NYC), at Gaffa's (Sydney) definitive 'Ten Years' exhibition and has made the second round of being long-listed for the Aesthetica Art Prize (2015).

Lux has undertaken two residencies at Bundanon Trust and completed a research residency at Critical Path with long time collaborator Kathryn Puie, after which she co-devised, developed, performed in and premiered Soft Prosthetics and Metal Gods, June 2018 at Parramatta Riverside Theatres as part of Legs on the Wall's double bill Above Ground. Lux commenced 2018 with an artistic residency at Arteles in Finland, winning the non acquisitive Cumberland Art Prize with the work she made there and returned to open her last solo exhibition: Defying Damage: Decolonising the Gaze at Peacock Gallery. This body of work is currently on exhibition (Mar - Sep 2020) at the Museum of the Palestinian People D.C., USA and proudly funded by Create NSW. Lux will be exhibiting her solo exhibition at Stanley Street Gallery, Sydney Nov 2020 and will return to D.C in Jan 2022 for a selected solo exhibition at the Australian Embassy.

Links

<https://stanleystreetgallery.com.au/exhibitions/lux-eterna>

For further information on the artist including CV, High Res Images please contact Merilyn Bailey 0407406414 or Liza Feeney 0412213553 at Stanley Street Gallery.

1/52-54 Stanley Street Darlinghurst NSW 2010

P: 0293681142 www.stanleystreetgallery.com.au E: mail@stanleystreetgallery.com.au

Hours: Thurs - Fri 11-6pm, Sat 11am-5pm